

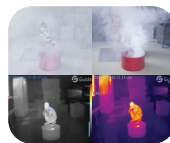
PR Gen2 Series Firefighter Thermal Camera

Overview

The PR Gen2 series combines high resolution, a large display screen, multiple scene modes, temperature analysis functions, and a strong protection rating, which can break through the limitations of harsh environments such as high temperatures, high humidity, and thick smoke in fire scenes to help firefighters see the surrounding environment quickly and clearly, locate the fire and search for trapped individuals more accurately, providing users with more efficient and safe fire visualisation solutions.



Features



See through smoke

Quickly generates clear thermal images without focusing, aiding navigation in smoke-filled environments.



Crisp and Smooth Imaging

Up to 640×480 IR resolution, 60Hz frame rate, paired with an anti-glare display for an exceptional visual experience.



High-Temperature Durability

Fully functional at 260°C for up to 5 minutes, IP67 waterproof and dustproof, and resistant to 2-meter drops.



Wide Temperature Range

Measures from -40°C to 2000°C (with aperture), supports temperature analysis and over-temperature alarms.



128GB Large Storage

Supports photo and video capture, lag-free shooting, with 128GB capacity for storing over 20,000 images.



Multi-Functional Components

Dock for charging and data transfer; practical telescopic buckle and lanyard; optional digital camera module.

Kidde Australia Pty Ltd

ABN 68 006 252 428

Building F, Unit 1
3-29 Birnie Avenue
Lidcombe NSW 2141
Australia
1800 654 435

www.kidde.com.au

©2025 Kidde, All rights reserved.

Technical Specifications

Dimensions	PR410	PR610
Infrared resolution	384×288@12μm	640×480@12μm
Frame rate	60Hz/9Hz	
Field of view	50°×37°	
Focusing mode	Focus-free	
Measurement range	Support auto-switching: -40°C to 150°C, 0°C to 650°C, Optional 500°C to 2000°C (Aperture is required)	
Measurement accuracy	±2°C or ±2%, whichever is greater	
Display screen	4.3" LCD, 800×480 Pixel	
Function	Photography and video recording, OTA update	
Storage media	Local storage (128 GB)	
External interface	USB-C, Micro HDMI, Tripod socket	
Wi-Fi	Yes, it can be connected to the mobile terminal for image and realtime video transmission	
Battery type	Lithium-ion rechargeable battery	
Operating time	≥4 hours	
Working temperature	General Working temperature range: -10°C to +50°C; Specific Working temperature ranges: 80°C: 30 minutes, 120°C: 10 minutes, 260°C: 5 minutes	
Weight	≤1.3kg (with battery)	
Size	296×61×76.5 mm	

Software



PC Software (Windows) - Thermo Tools

Multiple image/video import methods: SD card, FTP, USB, cloud file

Infrared Image Analysis: Supports DIY analysis areas and batch processing

Video Analysis: Frame-by-frame analysis, dynamically displays temperature changes

Report Generation: Multiple report templates with customisable layouts and one-click export



Mobile App (iOS/Android) - FocusIR

Real-time Preview: Real-time streaming, instant preview on mobile phone

Remote Control: Sending control commands, such as focusing, recording photos/videos

Image Editing: Supports editing analysis objects, modifying information and adding notes

Report Generation: Supports generating PDF reports with options for emailing, sharing and printing

Standard Package

